



Industrial Flat Cars

FreightCar America and its predecessors have been building durable, high quality flat cars for over 100 years. The company has several flatcar designs from industrial, automotive and intermodal flat cars to heavy-duty special purpose flat cars. Shown here are a 70' 4" multi-purpose industrial flat car, and a 100-ton, 89' 4" flush deck flat car.

These 100-ton industrial flat cars are the optimal designs for carrying a variety of products, including pipe, steel, military vehicles, and other specialized loads. The all steel, welded, 70-foot flatcar has wood riser brackets, stake pockets and retractable lading strap anchors on its all-steel deck. The 89' 4" flush deck flatcar includes stake pockets, retractable lading anchors, webbing winches and a steel floor.



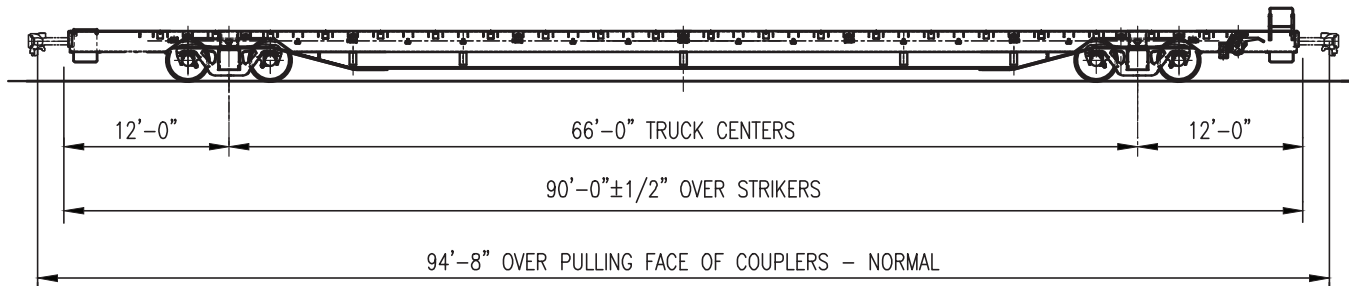
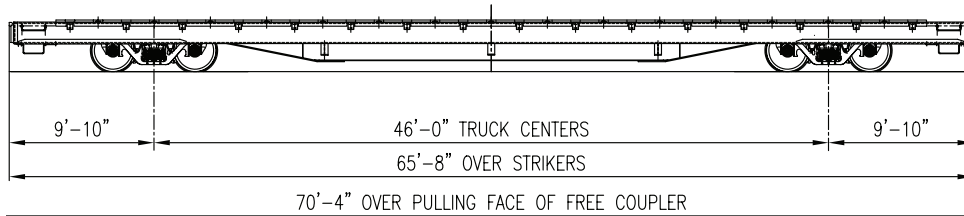
For more information contact us at:

800-458-2235

www.freightcaramerica.com



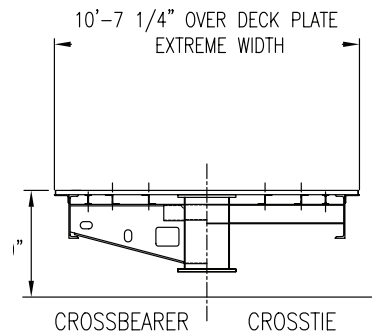
**FREIGHTCAR
AMERICA™**



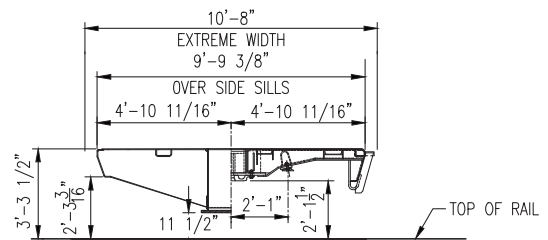
70-foot, 100-ton Industrial Flatcar

General Dimensions (Approximate)

Truck centers	46' 0"
Length of deck plate.....	64' 9-1/2"
Length over strikers.....	65' 8"
Length over pulling face of couplers.....	70' 4"
Width over side sills	9' 8-1/4"
Width over loading deck.....	10' 7-1/4"
Width between inside of stake pockets (minimum)	9' 8-1/4"
Height rail to top of deck plate	3' 9"
Lightweight (average).....	69,100 lbs.
Gross rail load	286,000 lbs.
Load limit.....	216,900 lbs.



End view, 70' flatcar



End view, 89' flatcar

89' 4" 100-Ton Flush Deck Flatcar 100-Ton Flush Deck Flatcar

Truck centers	66' 0"
Length over end sills	89' 4"
Over pulling face of couplers	94' 8"
Width over side sills	8' 4"
Width of loading deck (steel floor)	9' 3"
Height, rail to top of deck at bolster.....	3' 7-5/8"
Height, rail to bottom of center sill at center.....	0' 10-3/4"
Lightweight.....	79,300 lbs.
Gross rail load	286,000 lbs.
Load limit.....	206,700 lbs.

For more information contact us at:

Two North Riverside Plaza, Suite 1300

Chicago, IL 60606

800-458-2235

www.freightcaramerica.com



**FREIGHTCAR
AMERICA™**