



## ***Flatcars for Autorack Service***

These 89' cars include 70-ton flush deck flatcars for application of bi-level autoracks and 70-ton low-level flatcars designed for tri-level autorack service. The flat cars feature all steel, welded designs and are custom built to meet specific customer requirements. Shown here is an 89' 4" low deck flatcar for tri-level autorack service.

FreightCar America and its predecessors have been building durable, high quality flat cars for over 100 years. The company has several flatcar designs from industrial, automotive and intermodal flat cars to heavy-duty special purpose flat cars.

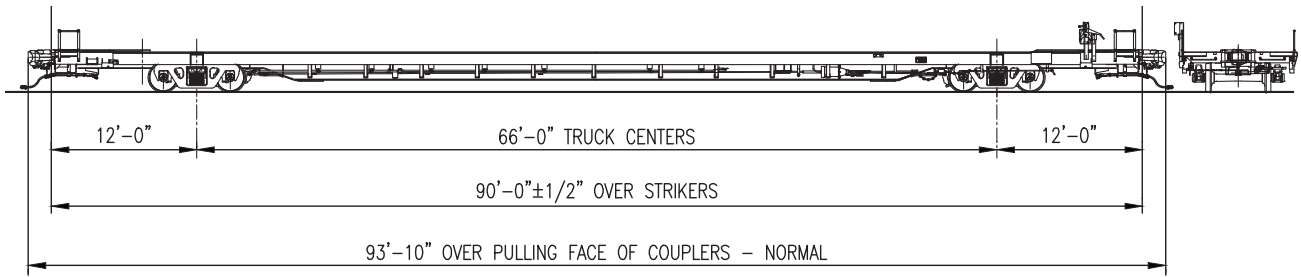


**For more information contact us at:**

**800-458-2235**

**[www.freightcaramerica.com](http://www.freightcaramerica.com)**

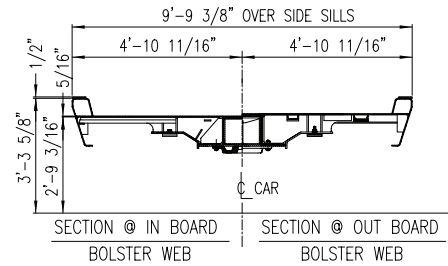
***FreightCar  
America***<sup>®</sup>



## 89' Low Level Flatcar for Tri-Level Autorack Service

### General Dimensions (Approximate)

Truck centers .....	66' 0"
Length over end sills .....	89' 4"
Length over pulling face of couplers.....	93' 10"
Width over deck plate .....	9' 10-3/8"
Width over side sills .....	9' 9-3/8"
Height, rail to top of deck .....	2' 9-3/16"
Height, rail to top of side sills.....	3' 3-5/8"
Height, rail to bottom of center sill at center	0' 11-1/2"
Lightweight (average).....	62,100 pounds
Gross rail load .....	220,000 pounds



## 89' Flush Deck Flatcar for Bi-Level Autorack Service

### General Dimensions (Approximate)

Truck centers .....	66' 0"
Length over end sills .....	89' 4"
Length over pulling face of couplers.....	93' 10"
Width over side sills (outboard of bolster) .....	9' 0"
Width over side sills (inboard of bolster).....	9' 9-3/8"
Extreme width.....	10' 8"
Height, rail to top of deck .....	3' 3-1/2"
Height, rail to bottom of center sill at center	0' 11-1/2"
Lightweight (average).....	63,000 pounds
Gross rail load .....	220,000 pounds

**For more information contact us at:**

*Two North Riverside Plaza, Suite 1300*

*Chicago, IL 60606*

*800-458-2235*

*www.freightcaramerica.com*

**FreightCar  
America®**