

*This procedure was developed as an Upgrade and may not be applicable to all AVC's.
Please consult your original drawings or contact FreightCar America Inc. for details.*

CONTENTS

- Text Procedure 1 Pages
- Illustrated Procedures..... 1 Pages

BILL OF MATERIAL PER UPGRADE AREA

- (1) M108093-000.....UGRADED SPLICE PLATE
- (4) 10231-140.....COLLAR
- (4) 10231-083.....HUCK
- (4) 10231-009.....HUCK
- (4) 10231-013.....COLLAR

OVERVIEW: This Procedure is intended to be an Upgraded Connection where the Top Chord is Spliced on the OEM equipment or repair procedure. Replaces part numbers M100022-000 and M100037-000.

PROCEDURE:

1. OEM equipment – Remove the upper and lower splice bars (**figure 1a & 1b**).
2. Repair Procedure – Follow AVC Top Chord Splice Repair Procedure and replace part #'s M100022-000 and M100037-000 with M108093-000. If upgrading an existing repair follow OEM instructions.
3. Locate part M108093-000 where old parts were removed. Aligning existing holes. (**figure 2a & 2b**)
4. Fasten with recommended fasteners. Repeat as needed.
5. Note: If a crack has formed into the side sheets refer to (**figure 3a & 3b**) for repair procedure.

FIGURE 1a

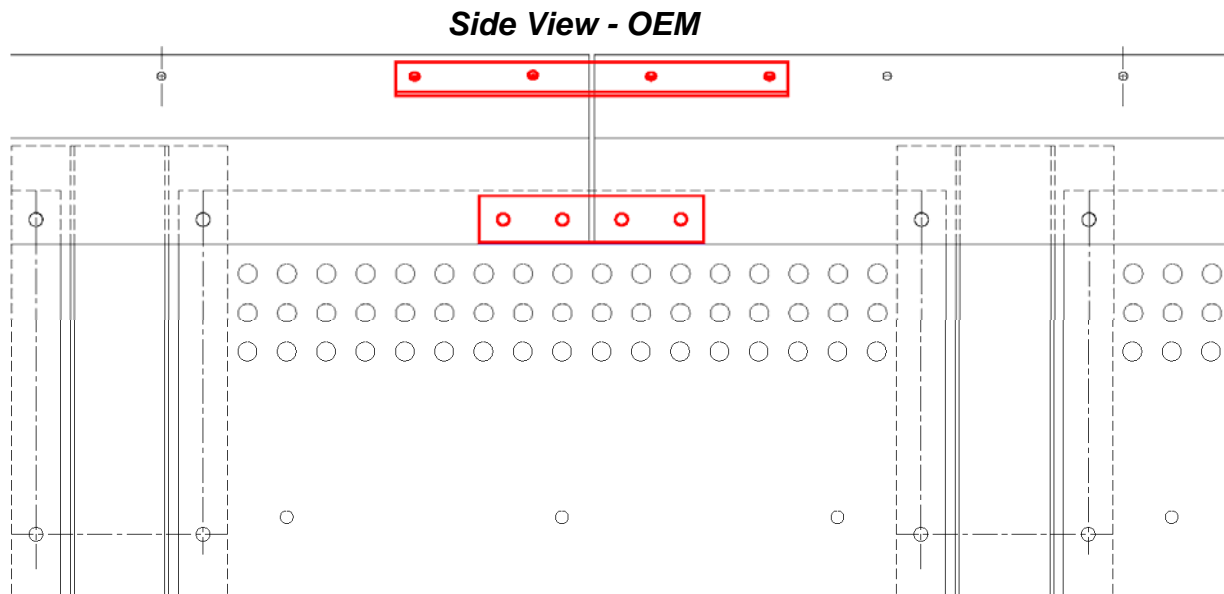


FIGURE 1b

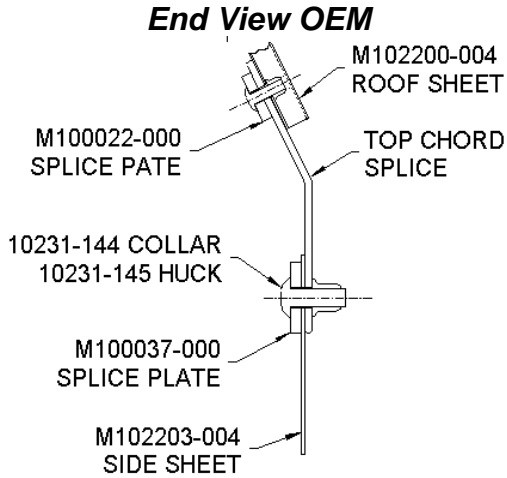


FIGURE 2a

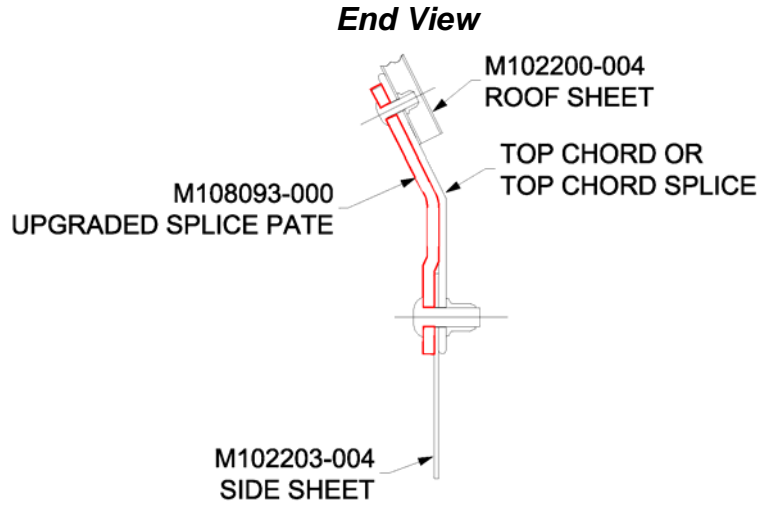


FIGURE 2b

Side View - Upgrade

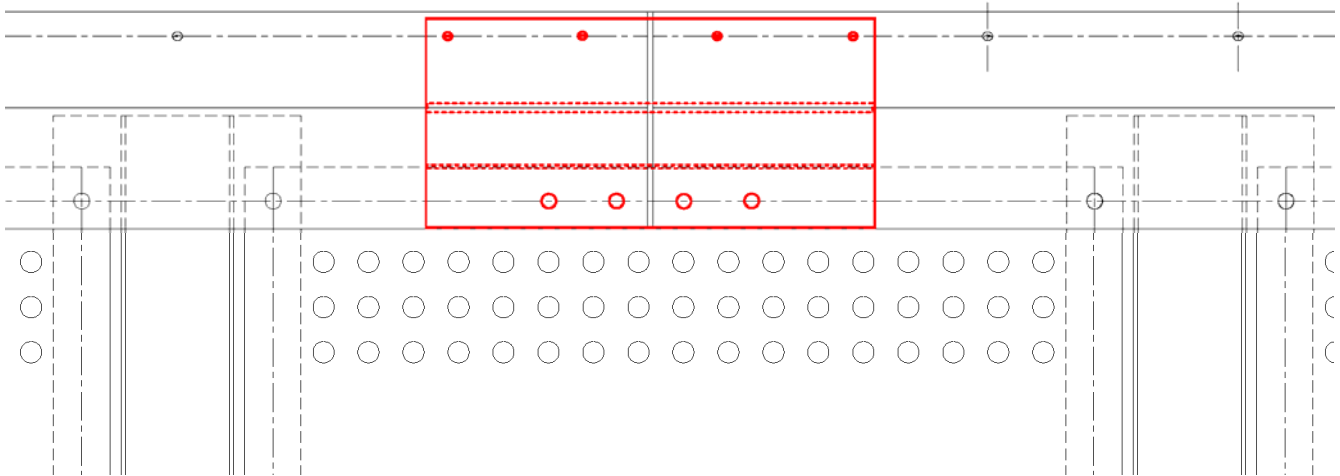


FIGURE 3a



FIGURE 3b

